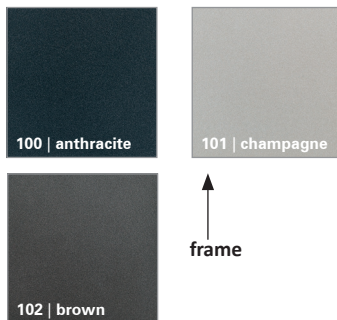


**CHAFING-DISH Buffet-Table**

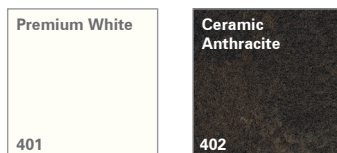
Buffet-Table with one opening to install a CHAFING-DISH unit, which are fully integrated in the table surface. VENTA recommend to use SPRING or WMF units as we designed a special magnetice holder to place the remote control direct under the table.

**BASIC**

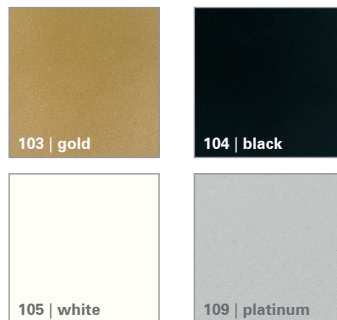
metal colors (frame)



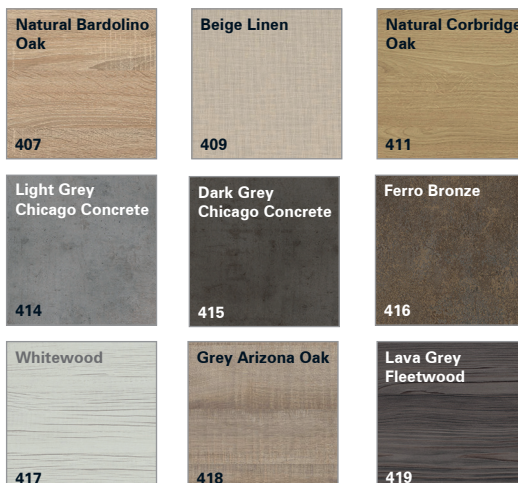
compact panel decor (table-top)

**OPTION**

metal colors (frame)



compact panel decor (table-top)

**CUSTOMIZED**

metal colors (frame)



IGP color range /  
color system Pearl  
Mica Effect: Classic  
effect shades with  
long-term value  
retention (58  
numbers)

compact panel decor (table-top)



any decor color  
which is available as  
a compact panel in  
the EGGER range

The decor lines will  
always be horizon-  
tal, not vertical.

**Item-No.: 50043100402**

measures: [LxWxH]: 800 x 500 x 760 mm  
 adjustable height: 840, 920, 1000 mm  
 weight: 26,0 kg

**Base**

steel, powder-coated, color: anthracite  
 profile 40 x 40 mm, on wheels, diameter=50 mm  
 (all wheels with brake)  
 weight: 12,6 kg  
 base is height adjustable

**Table-Top**

compact panel, 10 mm, decor: ceramic anthracite  
 weight: 13,4 kg

**Additional Electrical Equipment**

electric\_heating\_unit\_SPRING (item-number:  
 12301) 50-60 Hz, 230V (SPRING: 60 9505 80 01)

SPRING\_Induction\_Unit\_1000W\_Round  
 (item-number: 12303) 230 V / 50 Hz / 1000 Watt,  
 (SPRING: 58 9842 10 24)

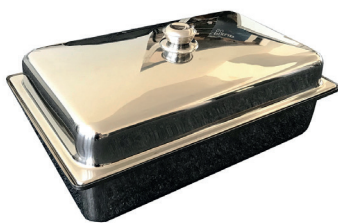
table-top, decor: ceramic anthracite (402)

Additional Equipment:  
 SHELF  
 color: premium white (401)

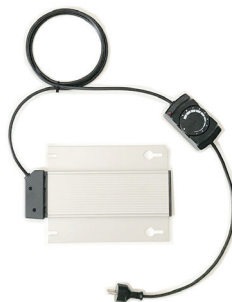


STAGE\_50\_M\_CHAFING-DISH\_2

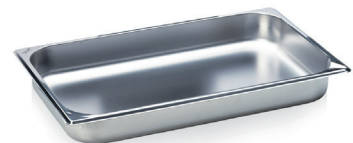
STAGE\_50\_XS\_CHAFING-DISH\_1

**built-in\_chafing-dish\_ECO\_SPRING**

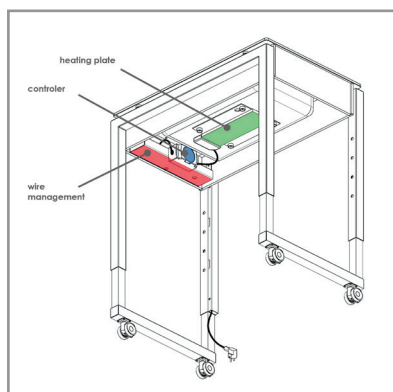
item-number: 12300

**electric\_heating\_unit\_SPRING**

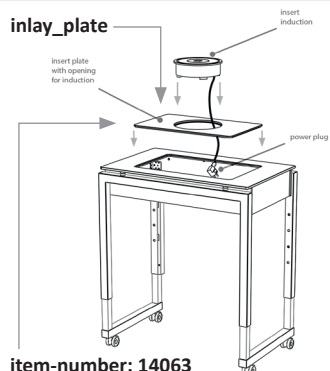
item-number: 12301

**insert, stainless\_steel\_1/1\_SPRING**

item-number: 12302

**SPRING\_Induction\_Unit\_1000W\_Round**

item-number: 12303

**inlay\_plate**

item-number: 14063